

Distribusi oleh



solusi terintegrasi

MALLEABLE IRON PIPE FITTING PLAIN & BANDED



CERTIFIED



SNI 2547:2008



TKDN

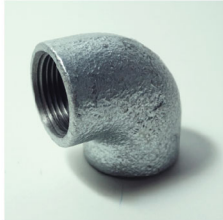
Tingkat Komponen Dalam Negeri



solusi terintegrasi



BENDS LONG
MALE & FEMALE 90°
Range Ukuran:
1/2" - 4"



ELBOW 90°
Range Ukuran:
1/4" - 2"



REDUCING ELBOW 90°
Range Ukuran:
3/4" x 1/2" - 1 1/2" x 1"



ELBOW 45°
Range Ukuran:
1/2" - 6"



TEES
Range Ukuran:
1/4" - 2"



REDUCING TEES
Range Ukuran:
1/2" x 1/4" - 2" x 1 1/2"



REDUCING SOCKET
Range Ukuran:
3/8" x 1/4" - 2" x 1 1/2"



V-RING/BUSHINGS
Range Ukuran:
3/8" x 1/4" - 6" x 4"



REDUCING HEXAGON NIPPLES
Range Ukuran:
3/4" x 1/2" - 1 1/4" x 1"



SOCKETS
Range Ukuran:
1/2" - 2"



DOUBLE/HEXAGON NIPPLE
Range Ukuran:
1/4" - 6"



PLUGS
Range Ukuran:
1/4" - 6"



DOP/CAPS
Range Ukuran:
1/2" - 6"



ROUND FLANGES
Range Ukuran:
1/2" - 6"



WATER MOER/UNION
Range Ukuran:
1/4" - 6"



EXTENSION PIECES
Range Ukuran:
1/2" - 1"



RING/LOCKNUTS
Range Ukuran:
1/2" - 6"



CROSSES
Range Ukuran:
1/2" - 4"



STREET ELBOW 90°
Range Ukuran:
1/2" - 3"

Distribusi oleh

PT BARINDO ANGGUN INDUSTRI

Jl. Simopomahan 148 - 150P, Tandes, Surabaya 60181

☎ (62-31) 7493333 (hunting)

☎ (62-31) 7493313

www.barindo.com

✉ info@barindo.com