

MANFAAT BAGI PERUSAHAAN PENYEDIAAN AIR



solusi terintegrasi

Benefit for Water Supply Company

METER AIR MEKANIK

- Meter air telah mendapat surat keterangan hasil pengujian dari UPTD Metrologi Legal.
Water meter has been certified by the UPTD Legal Metrology.
- Didesain pada instalasi pipa horisontal dan vertikal.
Designed for horizontal and vertical pipe installation.
- Menggunakan counter mekanis sistem kering yang bebas dari pengembunan.
Fitted with dry system mechanical counter to eliminate condensation.
- Jendela pembacaan terbuat dari kaca untuk melindungi meter air dari berbagai perusakan.
Glass panels protect water meter readouts from various forms of damage.
- Adjuster meter berada pada bagian dalam body agar tidak mudah dirubah oleh pihak yang tidak berwenang.
Meter adjusters are placed inside the water meter body to prevent unauthorized access.
- Semua bagian meter air yang bersentuhan dengan air dibuat dari material yang tidak beracun.
All parts in contact with water are made from non-toxic materials.



STANDAR MUTU DAN SERTIFIKASI

Quality Standard and Certification

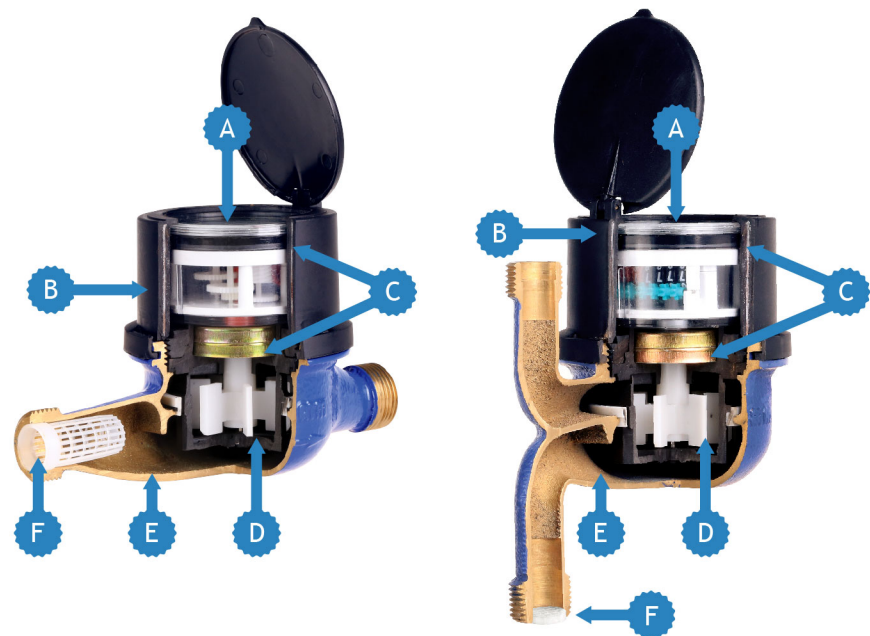
- Sertifikasi SNI 2547:2008 Spesifikasi Meter Air.
SNI 2547:2008 Certification for Water Meter Specifications Products.
- Sertifikasi laboratorium ISO/SNI 17025 dan TKDN.
ISO/SNI 17025 Laboratorium and TKDN Certification.
- Sertifikasi Proteksi IP68 dan ISO 9001:2015.
IP68 Protection and ISO 9001:2015 Certification.

PT BARINDO ANGGUN INDUSTRI

Jl. Simopomahan 148 - 150P
Tandes, Surabaya 60181
☎ (62-31) 7493333 (hunting)
☎ (62-31) 7493313
✉ info@barindo.com
www.barindo.com



DATA TEKNIS



A. ALAT PENGHITUNG

Sistem Mekanis

Counter. Counter using full mechanic system to ensure accuracy.

B. KEPALA METER

Terbuat dari plastik yang terdapat besi di dalamnya guna menghindari kerusakan dari luar.

Head of the Water Meter. Made of plastics material with steel inserted in it to make it more durable from outside damage.

C. ANTI MAGNET (Tahan hingga 2500 Gauss)

Perlindungan ganda pada sambungan magnet.

Magnet Resistant (up to 2500 Gauss). Special double protection from magnet tempering.

D. RUANG UKUR

Sistem baling-baling sensitif pada debit rendah.

Measuring Space. Using propeller system which is sensitive towards low debit.

E. BADAN METER AIR

Terbuat dari bahan kuningan dan plastik, tahan karat, dan mampu menahan tekanan.

Water Meter Body. Made of brass and plastic material resistant to rust and capable of withstanding pressure.

F. SARINGAN

Melindungi ruang ukur terhadap kotoran.

Filter. Keep the measuring space from dirt.

Diameter Nominal (DN)	mm	15					20					25					40					50									
		Berulir Threaded					Berulir Threaded					Berulir Threaded					Berulir Threaded					Flens Flange									
Sambungan/Koneksi Pipa <i>Pipe Connection</i>		Berulir Threaded					Flens Flange					Berulir Threaded					Flens Flange														
Tekanan Kerja Maksimum (MAP) <i>Maximum Admissible Pressure</i>	Bar	10	10	10	10	10	10	10	10	10	10	10	10	10	10	10	16	16	16	16	16	16	16	16	16	16					
Volume Terkecil yang Mampu Dibaca <i>Minimum Reading</i>	l	0.05	0.05	0.05	0.5	0.5	0.05	0.05	0.05	0.5	0.5	0.05	0.05	0.05	0.5	0.5	0.5	0.5	0.5	5	5	5	5	50	50						
Kapasitas Registrasi <i>Registration Capacity</i>	m ³	10.000	10.000	10.000	100.000	100.000	10.000	10.000	10.000	100.000	100.000	10.000	10.000	10.000	100.000	100.000	1.000.000					10.000.000					100.000.000				
Temperatur Kerja (MAT) <i>Maximum Admissible Temperature</i>	°C	50	50	50	50	50	50	50	50	50	50	50	50	50	50	50	50	50	50	50	50	50	50	50	50	50					
Posisi Pemasangan Pada Pipa <i>Pipe Connection Position</i>		Horizontal					Horizontal					Vertikal					Horizontal														
Rasio Ratio		R50 R80 R100 R160	R50 R80 R80	R50 R80 R80	R50 R80 R80	R50 R80	R50 R80 R100 R160	R50 R80 R80	R50 R80 R80	R50 R80 R80	R50 R80	R50 R80 R100 R160	R50 R80 R80	R50 R80 R80	R50 R80	R50 R80	R50 R80	R50 R80	R50 R80	R50 R80	R50 R80	R50 R80	R50 R80	R50 R80							
Aliran Kerja Maksimum (Q4) <i>Maximum Flow Rate</i>		2 3.125	3.125	5	12.5	20	2 3.125	3.125	5	12.5	20	2 3.125	3.125	5	12.5	20	50	78.75	125	312.5	312.5	500	787.5								
Aliran Kerja Nominal (Q3) <i>Nominal Flow Rate</i>		1.6 2.5	2.5	4	10	16	1.6 2.5	2.5	4	10	16	1.6 2.5	2.5	4	10	16	40	63	100	250	250	400	630								
Aliran Kerja Transisi (Q2) <i>Transition Flow Rate</i>	m ³ /jam	0.128 0.08 0.064 0.0625	0.2 0.125	0.32 0.2	0.8 0.5	1.28 0.8	0.128 0.08 0.064 0.0625	0.2 0.125	0.32 0.2	0.8 0.5	1.28 0.8	0.128 0.08 0.064 0.0625	0.2 0.125	0.32 0.2	0.8 0.5	1.28 0.8	3.2 2	5.04 3.15	8 5	20 12.5	20 12.5	32 20	50.4 31.5								
Aliran Kerja Minimum (Q1) <i>Minimum Flow Rate</i>		0.032 0.02 0.016 0.0156	0.05 0.031	0.08 0.05	0.2 0.125	0.32 0.2	0.032 0.02 0.016 0.0156	0.05 0.031	0.08 0.05	0.2 0.125	0.32 0.2	0.032 0.02 0.016 0.0156	0.05 0.031	0.08 0.05	0.2 0.125	0.32 0.2	0.8 0.5	1.26 0.787	2 1.25	5 3.125	5 3.125	8 5	12.6 7.875								
Toleransi Penyimpangan Q4...Q2 untuk suhu ≤30° <i>Max Permissible Error Q4...Q2 for temp ≤30°</i>	%	≤ ±2	≤ ±2	≤ ±2	≤ ±2	≤ ±2	≤ ±2	≤ ±2	≤ ±2	≤ ±2	≤ ±2	≤ ±2	≤ ±2	≤ ±2	≤ ±2	≤ ±2	≤ ±2	≤ ±2	≤ ±2	≤ ±2	≤ ±2	≤ ±2	≤ ±2	≤ ±2							
Toleransi Penyimpangan Q4...Q2 untuk suhu >30° <i>Max Permissible Error Q4...Q2 for temp >30°</i>	%	≤ ±3	≤ ±3	≤ ±3	≤ ±3	≤ ±3	≤ ±3	≤ ±3	≤ ±3	≤ ±3	≤ ±3	≤ ±3	≤ ±3	≤ ±3	≤ ±3	≤ ±3	≤ ±3	≤ ±3	≤ ±3	≤ ±3	≤ ±3	≤ ±3	≤ ±3	≤ ±3							
Toleransi Penyimpangan Q1 <i>Max Permissible Error Q1</i>	%	≤ ±5	≤ ±5	≤ ±5	≤ ±5	≤ ±5	≤ ±5	≤ ±5	≤ ±5	≤ ±5	≤ ±5	≤ ±5	≤ ±5	≤ ±5	≤ ±5	≤ ±5	≤ ±5	≤ ±5	≤ ±5	≤ ±5	≤ ±5	≤ ±5	≤ ±5	≤ ±5							
(DN)		15					20					25					40					50									
a		165mm		165mm			165mm	190mm	260mm	300mm	245mm	245mm	125mm	145mm	225mm	270mm	245mm	200mm	200mm	250mm	300mm	350mm	450mm	500mm							
a1		-		-			-	-	-	-	-	-	145mm	165mm	195mm	244mm	234mm	-	-	-	-	-	-	-							
b		252mm		252mm			252mm	276mm	385mm	463mm	421mm	-	212mm	231mm	350mm	432mm	421mm	165mm	200mm	220mm	285mm	340mm	405mm	460mm							
c		23mm		16mm			21mm	22mm	27mm	57mm	57mm	57mm	21mm	22mm	27mm	54mm	57mm	125mm	160mm	180mm	240mm	295mm	355mm	410mm							
d		74mm		74mm			83mm	82mm	82mm	103mm	112mm	112mm	83mm	82mm	82mm	103mm	112mm	4x19mm	8x19mm	8x19mm	8x23mm	12x23mm	12x28mm	12x28mm							
e		86mm		86mm			86mm 95.5mm	86mm	86mm	136mm	136mm	136mm	86mm 95.5mm	86mm	86mm	136mm	136mm	20mm	22mm	22mm	24mm	24mm	26mm	28mm							
f		-		-			-	-	-	-	-	-	115mm	120mm	121mm	176mm	185mm	3mm	3mm	3mm	4mm	4mm	4mm	4mm							
g		-		-			-	-	-	-	-	-	-	-	-	-	-	252mm	272mm	282mm	341mm	371mm	480mm	516mm							
R		1/2 inch		1/2 inch			1/2 inch	3/4 inch	1 inch	1 1/2 inch	2 inch	Flens PN16	1/2 inch	3/4 inch	1 inch	1 1/2 inch	2 inch	-	-	-	-	-	-	-							