

# MANFAAT BAGI PERUSAHAAN PENYEDIAAN AIR



*solusi terintegrasi*

## Benefit for Water Supply Company

## STANDAR MUTU DAN SERTIFIKASI *Quality Standard and Certification*

## SMART METER

- Meter air telah mendapat surat keterangan hasil pengujian dari UPTD Metrologi Legal.  
*Water meter has certificated from the UPTD Legal Metrology.*
- Meter air telah memiliki sertifikat izin penggunaan postal dari Kementerian Komunikasi dan Informatika.  
*Water meter has postal certificated from Ministry of Communications and Information Technology.*
- Menggunakan counter/register elektronik dengan sistem AMR (Automated Meter Reading).  
*Water meter register in the form of electronic implemented with AMR (Automatic System Reading).*
- Jumlah pengiriman data bacaan meter air dapat diprogram sesuai kebutuhan.  
*Data transfered from water meter reading can be programmed as needed.*
- Dilengkapi sensor medan magnet yang dapat mendeteksi dan melaporkan gangguan magnet dari luar, apabila diperlukan, bisa mempercepat bacaan meter sebagai hukuman.  
*Equipped by magnetic sensor to detect and report magnetic tempering, speed up the meter reading can be done as punishment if necessary.*
- Dilengkapi software yang dapat mendeteksi indikasi kebocoran instalasi perpipaan.  
*Equipped by software to detect water leakage on piping installation.*
- Dilengkapi software yang dapat mendeteksi dan melaporkan aliran balik, bacaan meter tetap maju/positif, apabila diperlukan, bisa mempercepat bacaan meter sebagai hukuman.  
*Equipped by software to detect and report reverse flow, meter reading will always performed positive, speed up the meter reading can be done as punishment if necessary.*
- Dilengkapi software yang dapat mendeteksi dan melaporkan kelebihan debit aliran.  
*Equipped by software to detect and report excess of water flow.*
- Perhitungan tarif dapat diprogram menyesuaikan zona waktu.  
*Different tariff for different time zones.*
- Dapat diintegrasikan dengan sistem pra-bayar.  
*Can be integrated with prepaid system.*

- Sertifikasi SNI 2547:2008 Spesifikasi Meter Air.  
*SNI 2547:2008 Certification for Water Meter Specifications Products.*
- Sertifikasi laboratorium ISO/SNI 17025 & 4064.  
*ISO/SNI 17025 & 4064 Laboratorium Certification.*
- Sertifikasi ISO 9001:2015.  
*ISO 9001:2015 Certification.*
- Sertifikasi Proteksi IP68.  
*IP68 Protection Certification.*



## DISTRIBUTOR

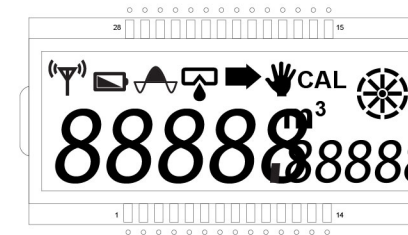


## PT BARINDO ANGGUN INDUSTRI

Jl. Simopomahan 148 - 150P  
Tandes, Surabaya 60181  
☎ (62-31) 7493333 (hunting)  
☎ (62-31) 7493313  
✉ info@barindo.com  
www.barindo.com







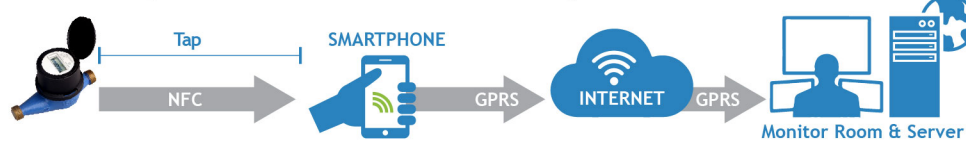
- LOW BATTERY
- WIRELESS
- OVER FLOW
- LEAK
- REVERSE FLOW
- INTERFERENCE
- m<sup>3</sup> METER CUBIC
- CAL CALIBRATION
- INDENTIFYING THE FLOW

## WATER METER TYPE

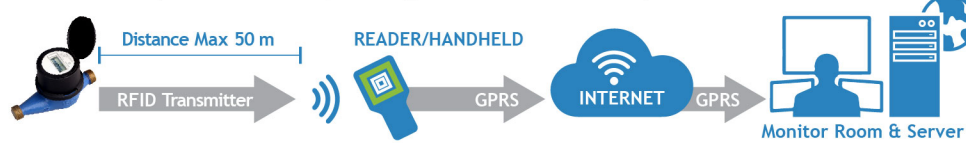
## TECHNICAL DATA

### Multi Jet Water Meter Electronic Register

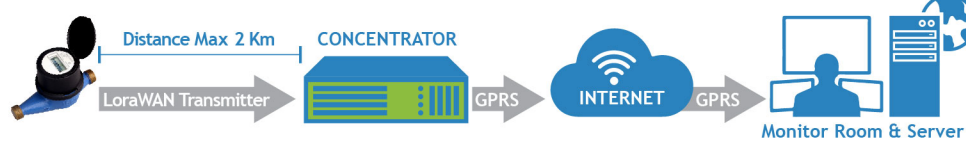
#### 1. NFC (Near-Field Communication)



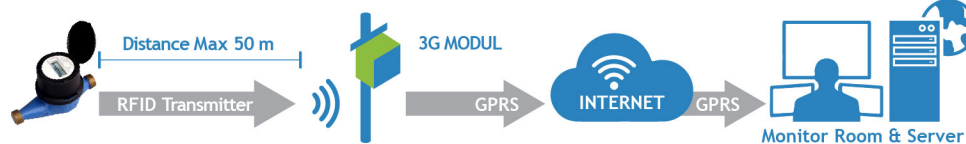
#### 2. RFID (Radio-Frequency Identification)



#### 3. Long Range Wireless Area Network (LoraWAN)



#### 4. 3G Modul



Diameter Nominal (DN)	mm	15	20	25	40	50	15	20	25	40	50	50	80	100	150	200	250	300
Sambungan/Koneksi Pipa Pipe Connection		Berulir Threaded					Flens Flange					Flens Flange						
Tekanan Kerja Maksimum Maximum Admissible Pressure (MAP)	Bar	10	10	10	10	10	10	10	10	10	10							
Volume Terkecil yang Mampu Dibaca Minimum Reading	l	0.01	0.01	0.01	0.01	0.01	0.01	0.01	0.01	0.01	0.01							
Kapasitas Registrasi Registration Capacity	m <sup>3</sup>	100.000	100.000	100.000	100.000	100.000	100.000	100.000	100.000	100.000	100.000							
Temperatur Kerja Maximum Admissible Temperature (MAT)	°C	50	50	50	50	50	50	50	50	50	50							
Posisi Pemasangan Pada Pipa Pipe Connection Position		Horizontal					Vertikal					Horizontal						
Rasio Rasio		R100	R100	R100	R100	R100	R100	R100	R100	R100	R100	R50 R100	R50 R100	R50 R100	R50 R100	R50 R100	R50 R100	R50 R100
Aliran Kerja Maksimum Maximum Flow Rate (Q4)		2	3.125	5	12.5	20	2	3.125	5	12.5	20	50	78.75	125	312.5	312.5	500	787.5
Aliran Kerja Nominal Nominal Flow Rate (Q3)	m <sup>3</sup> /jam m <sup>3</sup> /hr	1.6	2.5	4	10	16	1.6	2.5	4	10	16	40	63	100	250	250	400	630
Aliran Kerja Transisi Transition Flow Rate (Q2)		0.064	0.1	0.16	0.40	0.64	0.064	0.1	0.16	0.40	0.64	3.2 1.6	5.04 2.52	8 4	20 10	20 10	32 16	50.4 25.2
Aliran Kerja Minimum Minimum Flow Rate (Q1)		0.016	0.025	0.04	0.10	0.16	0.016	0.025	0.04	0.10	0.16	0.8 0.4	1.26 0.63	2 1	5 2.5	5 2.5	8 4	12.6 6.3
Toleransi Penyimpangan Q4...Q2 untuk suhu ≤30° Max Permissible Error Q4...Q2 for temp ≤30°	%	≤ ±2	≤ ±2	≤ ±2	≤ ±2	≤ ±2	≤ ±2	≤ ±2	≤ ±2	≤ ±2	≤ ±2	≤ ±2	≤ ±2	≤ ±2	≤ ±2	≤ ±2	≤ ±2	≤ ±2
Toleransi Penyimpangan Q4...Q2 untuk suhu >30° Max Permissible Error Q4...Q2 for temp >30°	%	≤ ±3	≤ ±3	≤ ±3	≤ ±3	≤ ±3	≤ ±3	≤ ±3	≤ ±3	≤ ±3	≤ ±3	≤ ±3	≤ ±3	≤ ±3	≤ ±3	≤ ±3	≤ ±3	≤ ±3
Toleransi Penyimpangan Q1 Max Permissible Error Q1	%	≤ ±5	≤ ±5	≤ ±5	≤ ±5	≤ ±5	≤ ±5	≤ ±5	≤ ±5	≤ ±5	≤ ±5	≤ ±5	≤ ±5	≤ ±5	≤ ±5	≤ ±5	≤ ±5	≤ ±5

#### A. ALAT PENGHITUNG

Sistem AMR (Automated Meter Reading) full elektronik menjamin akurasi pengukuran.  
Counter. Counter using full electronic system to ensure accuracy.

#### B. KEPALA/TUTUP METER

Terbuat dari plastik yang terdapat besi di dalamnya guna menghindari perusakan dari luar.  
Head. Made of plastics material with steel inserted in it to make it more durable from outside damage.

#### C. ANTI MAGNET (Tahan hingga 5000 Gauss)

Perlindungan ganda pada sambungan magnet.  
Magnet Resistant. Special double protection from magnet tempering.

#### D. RUANG UKUR

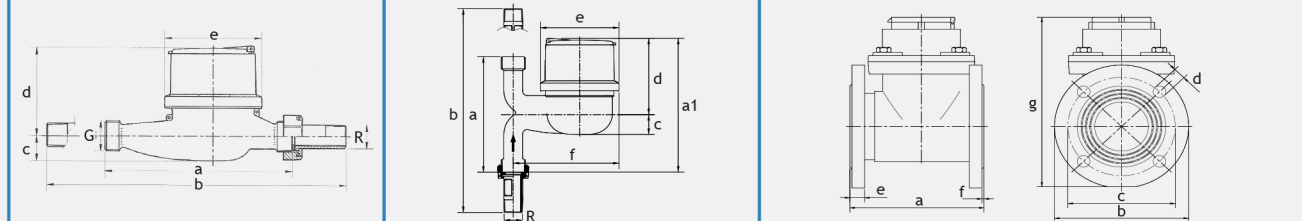
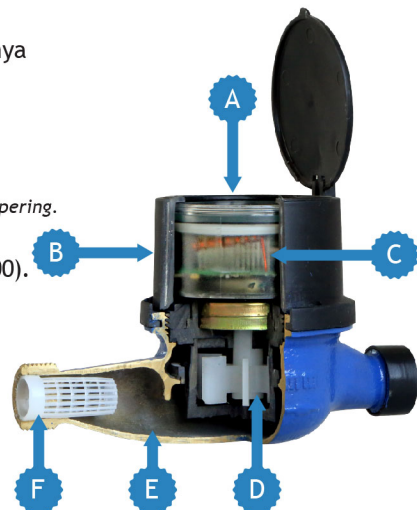
Sistem baling-baling sensitif pada debit rendah (R100).  
Measuring Space. Using propeller system which is sensitive towards low debit (R100).

#### E. BADAN METER AIR

Terbuat dari bahan kuningan, tahan karat, dan mampu menahan tekanan hingga 35 Bar.  
Water Meter Body. Made of brass material resistant to rust and capable of withstanding pressure up to 35 Bar.

#### F. SARINGAN

Melindungi ruang ukur terhadap kotoran.  
Filter. Keep the measuring space clean.



a	165 mm	190 mm	260 mm	299 mm	245 mm	125 mm	145 mm	225 mm	270 mm	245 mm	200 mm	200 mm	250 mm	300 mm	350 mm	450 mm	500 mm
a1	-	-	-	-	-	145 mm	165 mm	195 mm	244 mm	234 mm	-	-	-	-	-	-	-
b	261 mm	276 mm	385 mm	461 mm	-	212 mm	231 mm	311 mm	432 mm	421 mm	165 mm	200 mm	220 mm	285 mm	340 mm	405 mm	460 mm
c	22 mm	22 mm	28 mm	57 mm	57 mm	21 mm	22 mm	27 mm	54 mm	57 mm	125 mm	160 mm	180 mm	240 mm	295 mm	355 mm	410 mm
d	81 mm	73 mm	73 mm	101 mm	110 mm	83 mm	82 mm	82 mm	103 mm	112 mm	4x19 mm	8x19 mm	8x19 mm	8x23 mm	12x23 mm	12x28 mm	12x28 mm
e	86 mm	92 mm	92 mm	128 mm	128 mm	86 mm	86 mm	86 mm	136 mm	136 mm	20 mm	22 mm	22 mm	24 mm	24 mm	26 mm	28 mm
f	-	-	-	-	-	115 mm	120 mm	121 mm	176 mm	185 mm	3 mm	3 mm	3 mm	4 mm	4 mm	4 mm	4 mm
G	3/4 inch	1 inch	1 1/4 inch	2 inch	-	-	-	-	-	-	252 mm	272 mm	282 mm	341 mm	371 mm	480 mm	516 mm
R	1/2 inch	3/4 inch	1 inch	1 1/2 inch	-	1/2 inch	3/4 inch	1 inch	1 1/2 inch	2 inch	-	-	-	-	-	-	-